



# QUICK-GRIP™ CNC COLLET CHUCKS

- TEN-SECOND COLLET CHANGES
- 0.0002" TIR OR BETTER
- PARALLEL GRIP COLLETS WITH A 0.062" RANGE
- MOST COMPACT CHUCKS IN THE INDUSTRY
- IN-STOCK FOR SAME-DAY SHIPPING





# ROYAL QUICK-GRIP™ CNC COLLET CHUCKS

## The Most Advanced Collet Chucks Available for Today's CNC Lathes



- ✓ Ten-Second Collet Changes Slash Setup Times.
- ✓ Industry-Leading Gripping Range – 0.062".
- ✓ Ultra-Precision Accuracy – 0.0002" TIR Guaranteed.
- ✓ Extreme Grip Force = Most Aggressive Chip Removal Rates and Fastest Cycle Times.
- ✓ Maximum Rigidity Produces Superior Part Finishes.
- ✓ Best Tool Clearance – Critical For Live Tooling.
- ✓ Exclusive Royal Risk-Free Performance Guarantee.
- ✓ In-Stock for Same-Day Shipping.



## Three Unique Models For All Applications



### Accu-Length™

- Our best-selling model.
- Fixed-position collet maintains precise z-axis part positioning – critical for secondary operations.
- Usually the best choice for main spindles, and always required for sub-spindles to ensure proper part transfer.



### Pull-to-a-Stop

- Pullback design, however z-axis part positioning can be controlled with an included internal stop.
- Stop is easily removed for bar work.
- Often used in robot-load applications where workpiece confirmation is required.



### Pullback

- Most economical choice, but limited primarily to first operation, main-spindle applications.
- No ability to control z-axis part position.

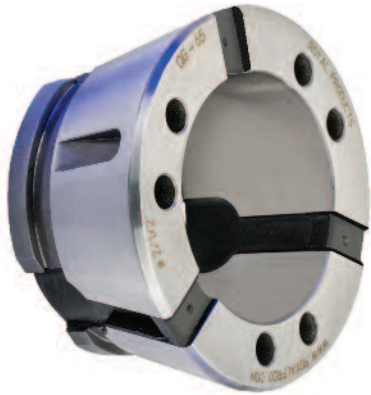
**NOTE** – In order to provide our customers with the best possible service, Royal maintains a huge inventory of Quick-Grip™ CNC Collet Chucks, plus more than 375 unique drawtube connector models – enabling same-day shipping on virtually all collet chuck orders.

# ROYAL QUICK-GRIP™ CNC COLLET CHUCKS



## Big Benefit #1 Ten-Second Collet Changes

With the Royal Quick-Grip™ CNC Collet Chuck, collet changes take just seconds. Here's how it works:



1. The unique collets are constructed of hardened steel segments securely joined together by vulcanized rubber. Each collet contains an annular hook and groove configuration on the rear section of its outer diameter.

2. The installation tool incorporates steel pins that align with reamed holes on the collet face. When these pins engage the face holes and the trigger on the tool is actuated, the collet becomes temporarily compressed.



3. In its compressed state, the collet can then be inserted into the collet chuck, where the hooks on the rear of the collet segments become axially aligned with a retaining groove in the chuck.

4. Releasing the installation tool allows the collet to spring open, seating the hooks in the groove and drawing the matching ID/OD tapers into full, positive contact. The collet is now installed.

**REDUCED SETUP TIME = GREATER THROUGHPUT AND HIGHER PROFITS!**





# ROYAL QUICK-GRIP™ CNC COLLET CHUCKS

## Big Benefit #2 Ultra-Precision Accuracy – 0.0002" or Better



While many users purchase the Royal Quick-Grip™ CNC Collet Chuck for its lightning-fast collet changes and wide gripping range, another major benefit of this system is its extreme accuracy.

With CNC collet chucks, there are several factors which affect overall system accuracy. These include:

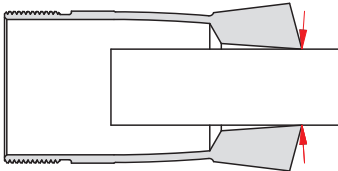
- Accuracy and tolerance of chuck mount (taper angle, gage line diameter, squareness of mounting flange, etc.)
- Tolerance and fit between chuck components (body to mounting adapter, closing sleeve to chuck bore, etc.)
- Accuracy and tolerance of collets (OD collet angle, bore sizing, concentricity of ID to OD, etc.)

The manufacturing processes for Royal CNC collet chucks and collets have all been fully optimized to achieve the absolute tightest tolerances and highest accuracies. While we guarantee our chucks at 0.0002" TIR between the A-mount taper and collet chuck closing sleeve, they often run at 0.00005" or better! Round-bore collet accuracy is also guaranteed to be within 0.0002" TIR.

This means that out of the box, with absolutely no indicating in, you can expect to achieve a **Quick-Grip™ total system accuracy of 0.0004" TIR or better.** We know of no other collet chuck manufacturer that can consistently produce such an exact level of precision.

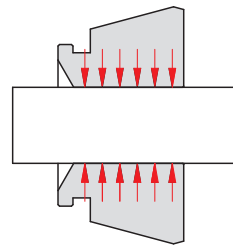
**How much time do you waste boring jaws? The Royal Quick-Grip™ pays for itself in no time.**

## Big Benefit #3 Industry-Leading Gripping Range – 0.062"



### Spring-Type Collet

With a spring-type collet, unless the bore is exactly sized to the workpiece diameter there will be reduced contact, resulting in compromised accuracy and grip force.



### Quick-Grip Collet

With a Quick-Grip™ collet, the segments always remain parallel to the workpiece, helping to maintain optimum accuracy and grip force.

Royal Quick-Grip™ Collets have a **much wider collapse range than conventional spring collets.** A spring-type collet can only be compressed by up to 0.005" before there is a sharp drop off in both grip force and accuracy due to the changing angle of the gripping surface.

However, with the unique design of the Royal Quick-Grip™ collet, each collet segment is bonded to the adjacent segments with vulcanized rubber. This ensures that **the collet segments always remain parallel to the workpiece** as the collet is compressed, giving the Quick-Grip™ collet a full collapse range of .062" (nominal diameter +/- .031).

### Advantages of this system include:

- The ability to compensate for oversized and undersized bar stock.
- Superior accuracy and grip force – by remaining parallel to the workpiece, each collet segment **makes contact over its entire length.** With old-technology spring collets, over-collapsing results in just a narrow ring of contact near the collet face.
- The wide range of the Royal Quick-Grip™ collet provides the ability to clear larger diameters in order to grip on smaller diameters. This "over the shoulder" feature offers second-op advantages over traditional spring collets.

# ROYAL QUICK-GRIP™ CNC COLLET CHUCKS

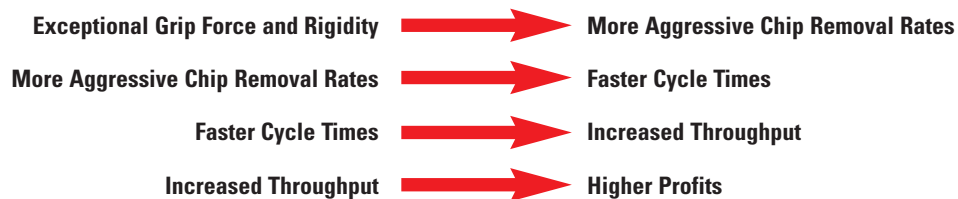


## Big Benefit #4 Slash Cycle Times and Boost Throughput

### Royal Quick-Grip™ Offers Unmatched Grip Force and Rigidity

The parallel-grip functionality of Royal Quick-Grip™ Collets provides extremely high grip force by maintaining workpiece contact over the entire length of each collet segment (see image on previous page). Additionally, the design and construction of all Royal Quick-Grip™ CNC Collet Chucks has been optimized for rock-solid rigidity.

This combination of tremendous grip force and outstanding rigidity results in something that every manufacturer strives for – the ability to **drastically increase speeds, feeds and depth of cut**, without sacrificing part accuracy or surface finish.

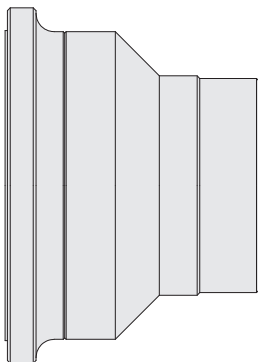


Many Royal Quick-Grip™ users have told us that they have made back their investment in just a few short weeks thanks to such a significant increase in throughput over their previous three-jaw chucks and older-style collet chucks.

## Big Benefit #5 Most Compact Collet Chucks in the Industry

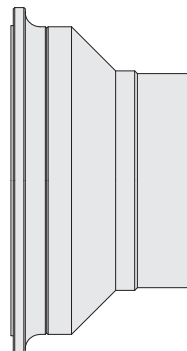
Royal Accu-Length™ CNC Collet Chucks have been optimized for tool clearance and rigidity. Short lengths **maximize the usable space inside the machining envelope**, while extremely compact nose diameters reduce tool interference and enable machining to take place closer to the spindle.

**Compact**  
(Standard Length/Compact Nose Diameter)



The traditional length ensures that these chucks can accommodate most machine drawtubes, while a greatly reduced nose diameter offers the **best tool clearance in the industry**.

**Ultra-Compact**  
(Compact Length/Compact Nose Diameter)



These are the smallest collet chucks available. Often mounted on sub-spindles, Royal's Ultra-Compact CNC Collet Chucks make a great choice when maximum z-axis capacity is the primary requirement.



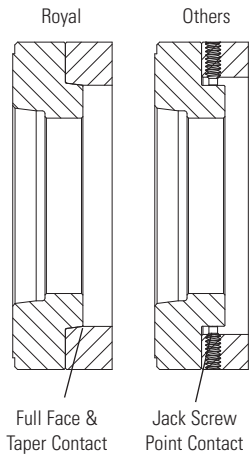
# ROYAL QUICK-GRIP™ CNC COLLET CHUCKS

## Big Benefit #6 Exclusive Royal Bolt and Go™ Mounting Advantage

All Royal CNC Collet Chucks mount quickly, easily, and accurately due to our exclusive Bolt & Go™ mounting interface.

Many Royal chuck models mount directly to the lathe spindle without the need for an adapter plate. However, for models that do use a plate, a precision-ground tapered fit between the plate's male pilot and chuck body's female recess **ensures a consistent, near-perfect fit without the need for any adjustment**. This precision fit also enhances overall system rigidity by providing both face and taper contact.

Other chuck manufacturers use a less precise approach. Instead of providing a near-perfect tapered interface between the chuck body and plate, they rely on a loose fit between a male cylindrical pilot on the plate and an oversized bore within the chuck body. Because there is clearance between these two components, jack screws located around the circumference must be used to radially true-up the chuck on the plate. This process of using the jack screws and an indicator to dial out the runout each time a chuck is mounted wastes valuable production time. The rigidity of this design is also significantly less due to the limited point-contact provided by the screws against the pilot as compared to the full-contact tapered fit of the Royal Bolt & Go™ interface.



**Knock 30 Minutes Off Your Setup Time with Royal Bolt & Go™**

## Big Benefit #7 Risk-Free Performance Guarantee

- ✓ Smarter Design
- ✓ Better Quality
- ✓ Outstanding Support

**Risk-Free  
PERFORMANCE  
Guarantee**

- ✓ Same-Day Shipping
- ✓ No Hassles
- ✓ Risk-Free Guarantee

In addition to providing superior quality, service, support, and deliveries, Royal CNC Collet Chucks also carry an industry exclusive risk-free performance guarantee. This no-risk guarantee allows our customers to run a collet chuck on the toughest jobs in their shop for 45-days, and if they are not 100% satisfied with its performance, we will take it back and arrange for a full refund through their distributor.

When you buy a CNC collet chuck from Royal Products, you can have **complete confidence** that we will not let you down. For over 70 years, Royal has been recognized as one of the most reliable and trusted suppliers in the metalworking industry. We are here for you today, and we'll be here for you tomorrow.

# ROYAL QUICK-GRIP™ CNC COLLET CHUCKS



## Big Benefit #8

## Precision-Made in USA

## ISO 9001: 2008 Certified

- Every Royal CNC collet chuck is completely manufactured in our modern factory on state-of-the-art automated CNC equipment.
- All chucks, sleeves, adapter plates, collets, etc., come off of our gantry-loaded multi-tasking machines complete – eliminating the accuracy and quality issues often associated with multiple setups/operations.
- All grinding takes place on precision Swiss-made CNC grinders that enable multiple features to be ground in a single setup, resulting in near-perfect tolerances and **ensuring absolute consistency from part to part.**
- Royal Products is an ISO9001-2008 registered company dedicated to continuous improvement. Every process is documented and followed down to the smallest detail for consistent quality – every time.



## Big Benefit #9

## Outstanding Support



Royal maintains a fleet of fully-equipped mobile showrooms designed to bring solutions to our customers' doorsteps. To schedule a visit to your company, please call 1-800-645-4174.

- Royal's knowledgeable team of applications engineers makes it very easy for you to do business with us. When you call Royal, the person you speak with will be a workholding expert, and if we can't offer you the best solution for your application, we'll do our best to recommend a company that can – even if it's competitor!
- Royal CNC Collet Chucks are sold through a **select network of the country's top industrial and machine tool distributors.** We also have strong relationships with all of the major machine tool builders and importers to make sure that our products seamlessly interface with their machines.
- With over forty factory-trained account managers strategically located throughout North America, our highly-qualified field support team is always ready and willing to serve you.

## Big Benefit #10

## We Make it Easy

- All Royal CNC collet chucks include everything needed for installation, (even the wrenches). We strive to give our customers **"the mint on the pillow"** treatment.
- Through the past thirty years of gathering machine tool specifications and working closely with all of the major machine tool builders, Royal Products has developed a huge database of drawtube specifications, virtually eliminating the need for a customer to ever measure a machine.
- **We now stock over 375 of the most common drawtube connector models,** and non-stock connectors are made very quickly from semi-finished blanks.
- All Royal CNC collet chucks come packaged in specially designed heavy-gage boxes with form-fitting foam inserts to provide complete protection of all contents.







# ROYAL QUICK-GRIP™ ACCU-LENGTH™ CNC COLLET CHUCKS

## Bolt & Go™

Our exclusive Bolt & Go™ mounting feature is standard on all Royal Quick-Grip™ Collet Chuck models. **Bolt & Go™ enables chucks to be mounted very quickly and ensures maximum accuracy and rigidity.** See page 8 for additional information.

## Completely Sealed

Lubricated for life, these chucks incorporate multiple O-ring seals to keep contaminants out and prevent chip pack-up on bore-thru applications.

## High RPM

All Royal Quick-Grip™ Collet Chucks are balanced by design for high-speed operation, and can often be run at higher speeds than conventional 3-jaw chucks because they are less affected by centrifugal force.



## Extremely Fast Collet Changes

Changing collets on a Royal Quick-Grip™ CNC Collet Chuck takes just a few seconds. A unique hook and groove design for securing collets is used instead of traditional threads.

## Wide Gripping Range

Royal Quick-Grip™ Collets have a 0.062" gripping range (+/- 0.031"), enabling them to accommodate undersized and oversized bar stock.

## High Accuracy

Royal Quick-Grip™ CNC Collet Chucks are very accurate – runout on the closing angle is **guaranteed to be within 0.0002" TIR.**

## Low-Profile

Royal Quick-Grip™ CNC Collet Chucks have smaller nose diameters than other quick-change collet chucks for superior tool clearance.

## Collet Compatibility

Royal Quick-Grip™ Collet Chucks can sometimes utilize other brands of quick-change collets. Call Royal to verify.

## Heavy-Duty Construction

All chuck components, except for the drawtube connector, are hardened to Rc 61-63 for high rigidity and durability.

## Easy Installation

Royal Quick-Grip™ Collet Chucks include all mounting hardware, mounting wrenches, and a custom-machined drawtube connector to ensure hassle-free installation.

## Specials

If you have a special application that goes beyond the scope of our standard line, we will be happy to design and build a custom system to meet your needs. Please contact a Royal applications engineer to discuss your requirements.

## Dead-Length Operation

Royal Quick-Grip™ Accu-Length™ CNC Collet Chucks incorporate dead length operation to eliminate part pullback. With this design, the collet is held stationary in the chuck body and a tapered sleeve pushes forward to compress it, resulting in precise z-axis workpiece positioning.

## Coolant Slinger

All bodies incorporate an oversized flange to protect the machine tool spindle bearings from coolant penetration.

## Shortest Length

Royal Quick-Grip™ CNC Collet Chucks are among **the shortest chucks available**, providing maximum work envelope utilization. This is especially important for smaller machines with limited z-axis travel.

Note – Collets and installation tool sold separately